

# DENON

## DBT-1713UD

UNIVERSAALNE AUDIO/VIDEO PLEIER

### Kiirjuhend

Täname teid DENON CD-pleieri valimise eest. Käesolev juhend annab teile samm-haaval juhised CD-pleieri seadistamiseks.

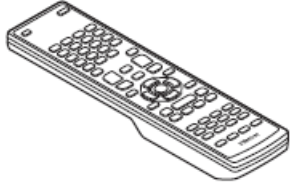
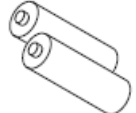

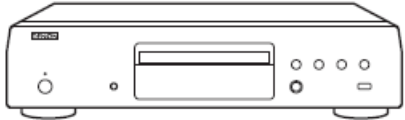



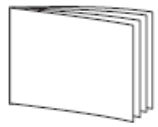

#### Kui seadistamisega tekivad raskused...

Kui puutute seadistamisel kokku raskustega, pöörduge abi saamiseks oma piirkonna DENONi klienditeeninduse poole.

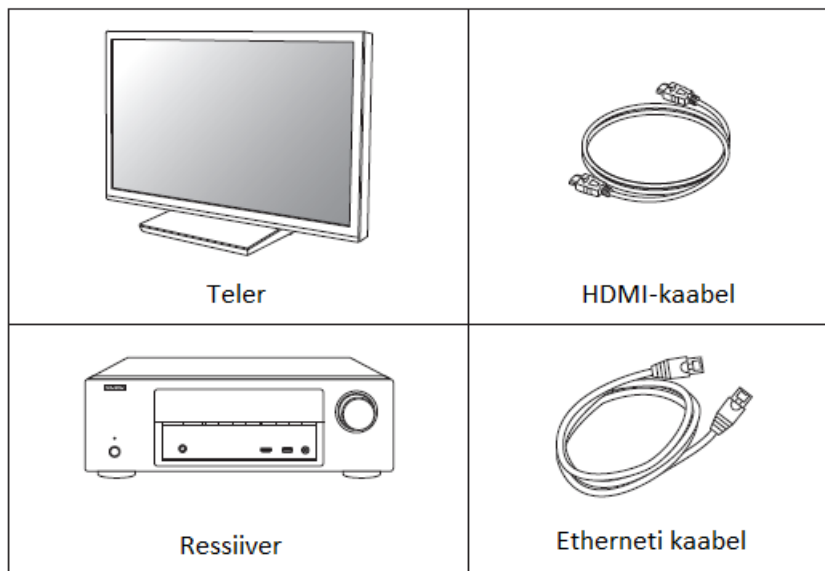
Vt karbis leiduvat addresslehte.

### Enne, kui alustate

Mis on karbis

 <p>Pult</p>	 <p>Patareid</p>	 <p>HDMI-kaabel</p>	
 <p>Pleier</p>		 <p>Toitejuhe</p>	
 <p>Ohutusjuhend</p>	 <p>Hooldusvõr- gustiku nimekiri</p>	 <p>Kiirjuhend</p>	 <p>Kasutusjuhend</p>

## Seadistamiseks vajalik



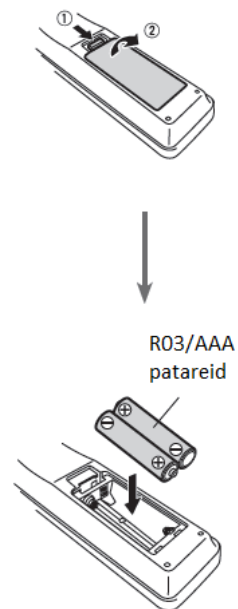
Esitatud joonised on ainult illustreeriva iseloomuga ja ei pruugi kujutada tegelikke tooteid.

## Seadistussammud

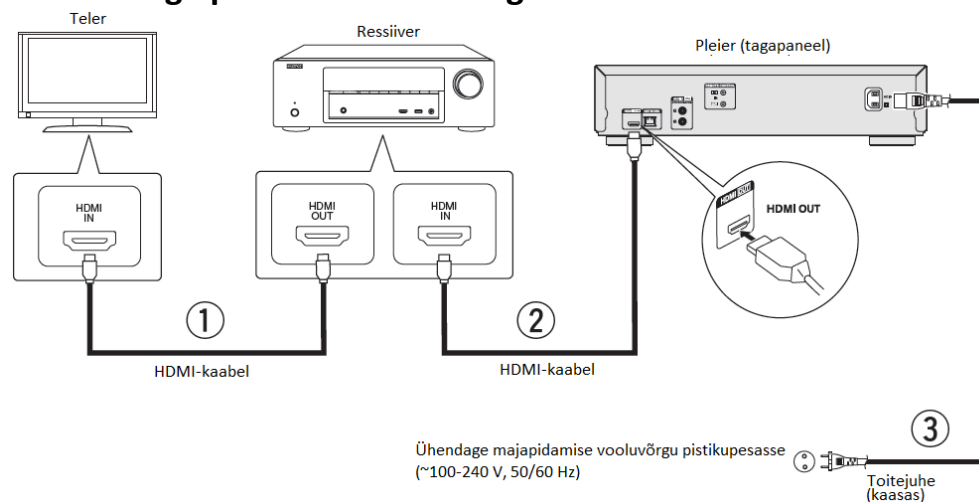
Seadistamine toimub viie sammuga.

1. Paigaldage patareid pulti
2. Ühendage pleier oma seadmega
3. Lülitage toide sisse
4. Sisestage plaat ja alustage taasesitamist
5. Taasesitage internetisisu

## 1. Paigaldage patareid pulti

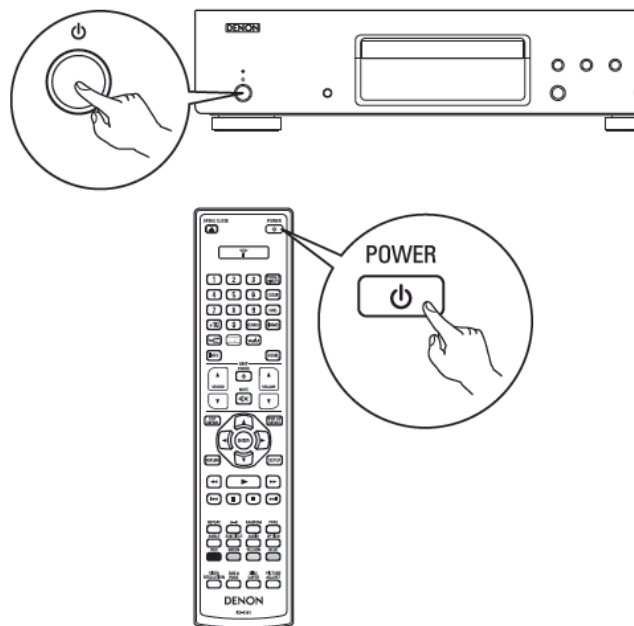


## 2. Ühendage pleier oma seadmega



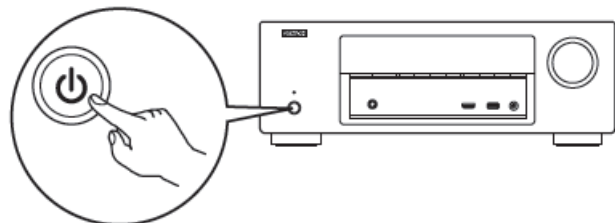
### 3. Lülitage toide sisse

#### 1. Lülitage pleier sisse.



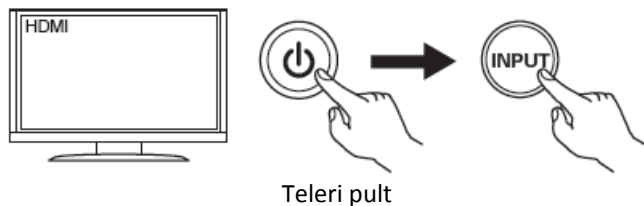
#### 2. Lülitage ressiiver sisse.

Valige oma ressiiveril sobiv HDMI-sisend.

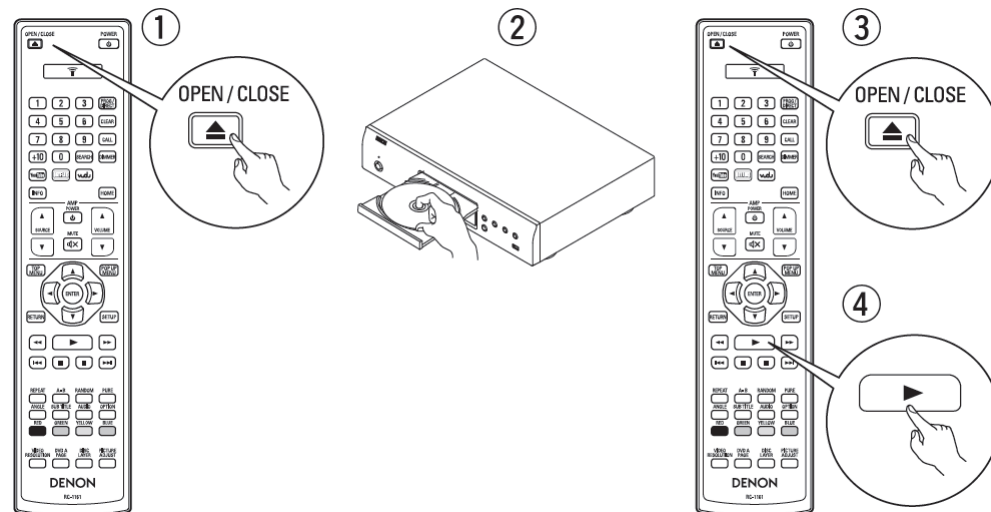


#### 3. Lülitage teler sisse.

Valige oma teleril sobiv HDMI-sisend.

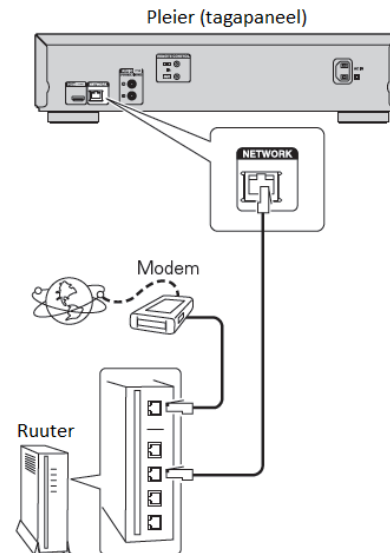


### 4. Sisestage plaat ja alustage taasesitamist

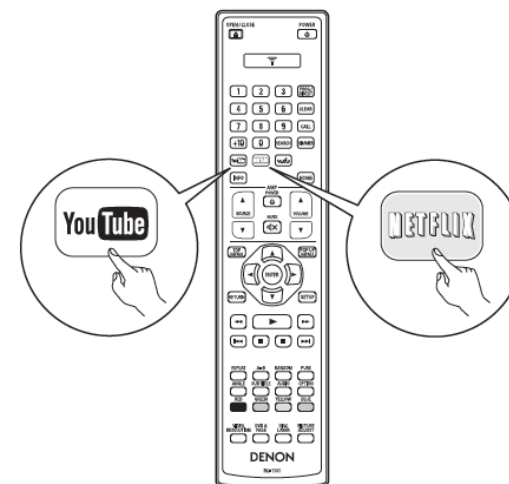


### 5. Internetisisu taasesitus

#### ① Võrgühendus



#### ② Taasesitus

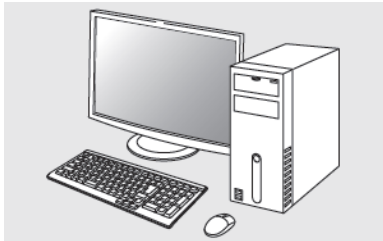


## Kasutusjuhend

Kaasasolev CD-ROM sisaldab CD-pleieri täielikku kasutusjuhendit Adobe PDF formaadis. Lugege nimetatud juhendist lähemalt CD-pleieri seadistamise, kasutamise ning võimaluste kohta.



1. Sisestage plaat arvutisse.



2. Järgigeekraanile kuvatud juhiseid või tehke topeltklõps PDF-failil.